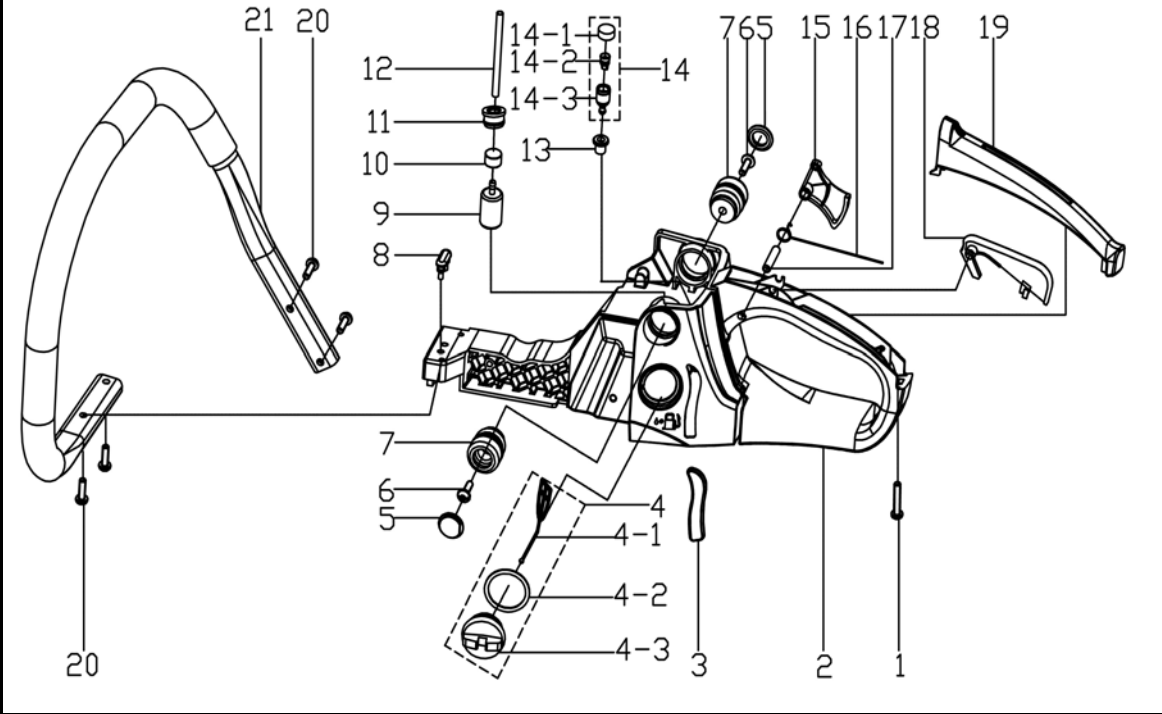


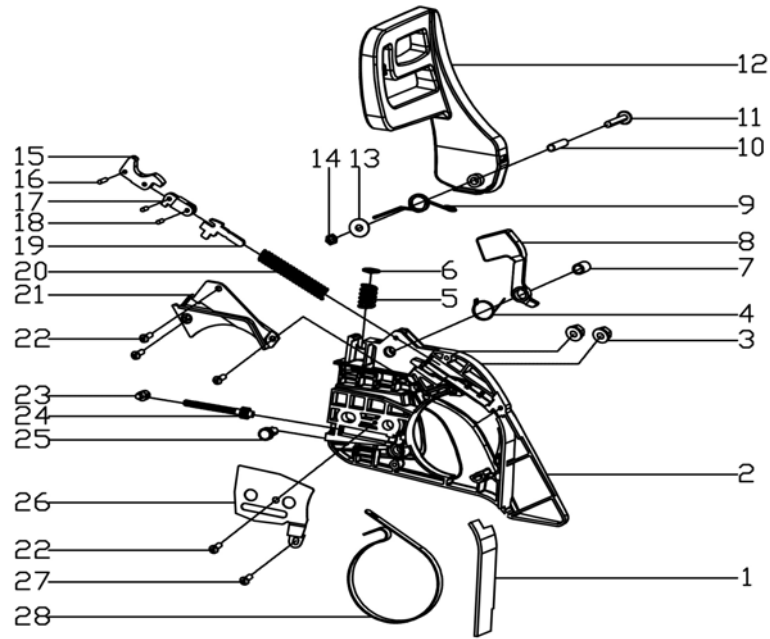
RPCS5445 (PC42A1401043B)

A. Fuel tank assembly, handle



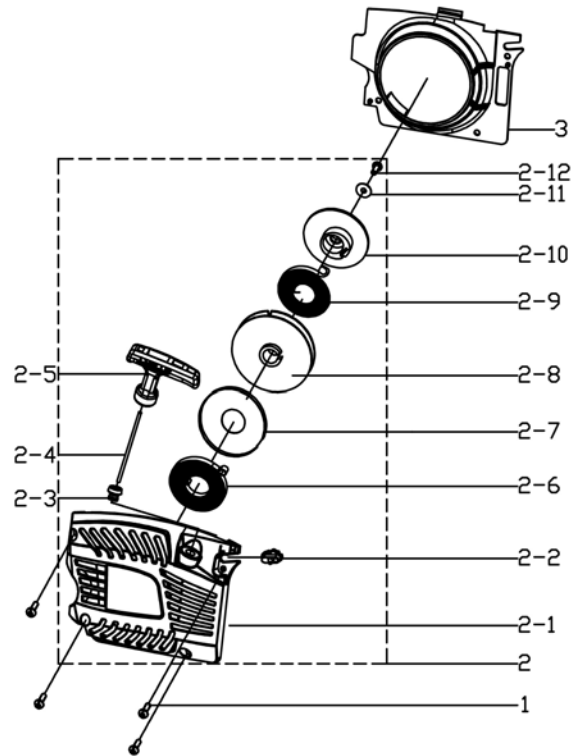
A1	3060313050	screw ST4.2*19	1
A2	3011005900	oil tank	1
A4		fuel tank assembly	1
A4-1	3011102070	falling-proof plate	1
A4-2	3020102500	O ring	1
A4-3	3011502320	cover of fuel tank	1
A5	3010403100	dust-proof cover	2
A6		screw M5*16	2
A7	3020804020	long shock absorber	2
A8	3020803010	oil-tank shock absorber	1
A9	3050602930	fuel filter	1
A10	3331300050	Plate	1
A11	3020800530	Fuel pipe plate	1
A12	3020700050	Fuel pipe	1
A13	3020802510	Balancer plate	1
A14	3050106500	Balancer	1
A15	3011108150	trigger	1
A16	3330501220	spring for trigger	1
A17	3060100150	bolt 6*24	1
A18	3011133640	trigger control arm	1
A19	3010412540	handle cover	1
A20	3060313220	screw ST4.8*16	4
A21	3231007040	handle	1

B.Rightet cover



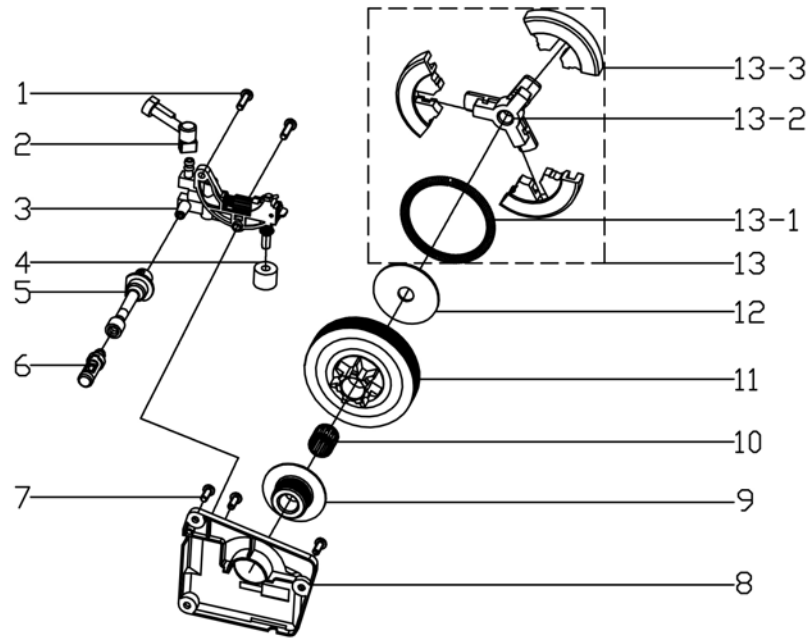
B1	3020501500	Dust-proof plate	1
B2	3010131500	right board	1
B3	3060403010	nut M8	2
B4	3330501210	Wieght hook spring	1
B5	3330503700	spring on front board	1
B6	3330903500	spring pressing board	1
B7	3330403500	Wieght hook spring pipe	1
B8	3010706810	Weight hook	1
B9		spring on front board	1
B10	3330403900	bolt	1
B11	3331502810	screw M5*40	1
B12	3011143510	front board	1
B13		washer 5*16*1	1
B14	3060402020	Nut M5	1
B15	3010501010	main arm	1
B16	3060100040	bolt 3*14	2
B17	3010500510	standby arm	1
B18	3060100030	bolt 3*9	1
B19	3330402550	brake arm	1
B20	3330500110	Brake spring	1
B21	3011142100	brake spring cover	1
B22	3060313010	screw ST4.2*10	4
B23	3331300840	Tensioner	1
B24	3331505570	screw m5*50	1
B25	3330801050	tensioner wheel	1
B26	3331400520	tensioner cover	1
B27	3060313230	screw ST4.2*8	1
B28	3330701540	brake band	1

C.Starter assembly



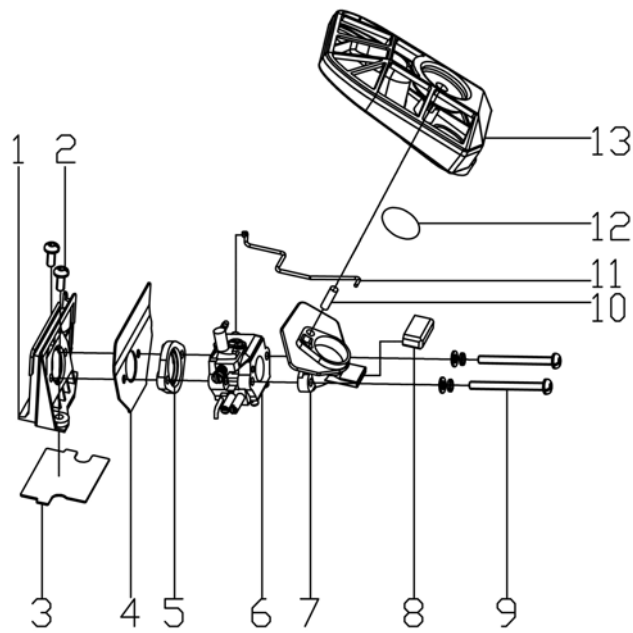
C1	3060311060	screw M5*16	4
C2		easy-starter	1
C2-1	3010109700	starter body	1
C2-2	3020902500		1
C2-3			1
C2-4	3051200070	rope	1
C2-5	3010802920	starter handle	1
C2-6	3330700180	main recoil spring	1
C2-7		spring plate	1
C2-8	3011602120	starter reel	1
C2-9	3330700190	standby recoil spring	1
C2-10	3011600260	starter wheel	1
C2-11	3060500070	washer $\varnothing 5 * \varnothing 16 * 1$	1
C2-12	3060313080	screw ST4.8*13	1
C3	3010410170	fan cover	1

D.Pump ,clutch assembly



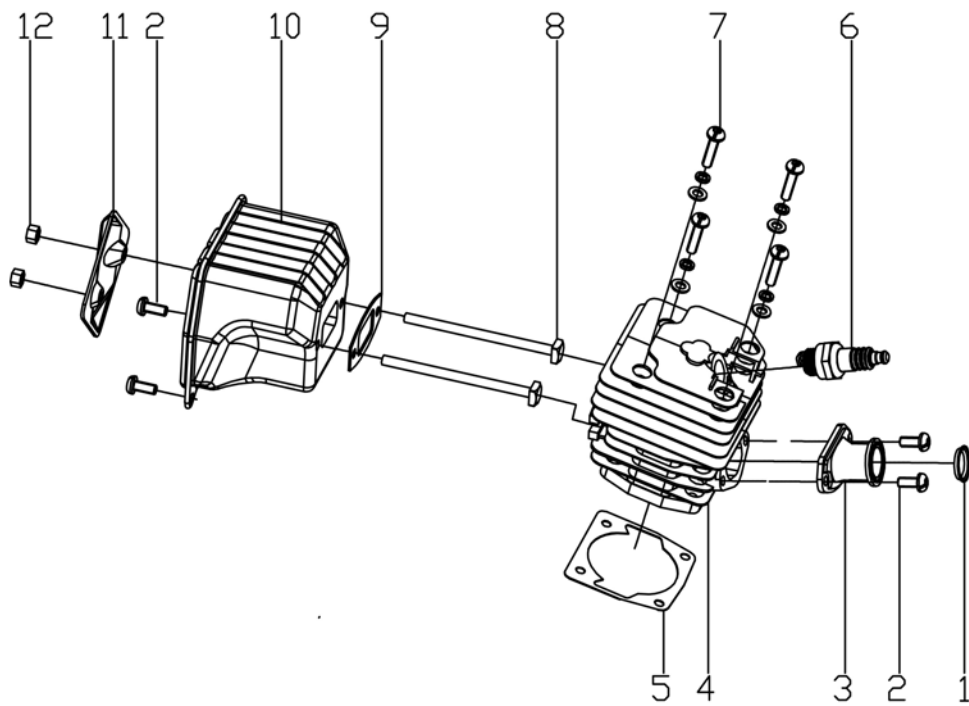
D1	3060311020	screw M4*14	2
D2	3021000520	oil pipe out	1
D3	3050108060	oil pump	1
D4	3051900800	sponge filter ring	1
D5	3020700530	oil pipe	1
D6	3050601520	oil filter	1
D7	3060311010	screw M4*10	3
D8	3011139400	cover of oil pump	1
D9	3011601030	worm	1
D10	3060701440	needle bearing 12*15*14.5	1
D11	3331000600	clutch drum	1
D12	3331800070	clutch washer	1
D13	3050101630	clutch assembly	1
D13-1			1
D13-2			1
D13-3			3

E. Carburetor, air filter assembly



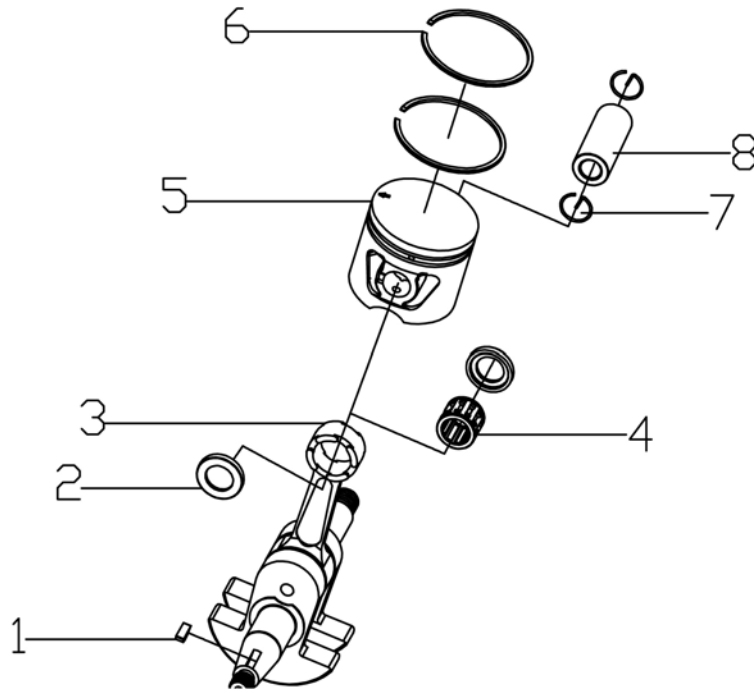
E1	3010704830	Air in-take bracket	1
E2	3060311040	screw M5*12	2
E3	3040101510	cushion plate	1
E4	3040204530	seal plate for air in-take bracker	1
E5	3010701300	air in-take flange	1
E6	3051800110	carburetor	1
E7	3010703920	air-in plate	1
E8		cushion for air-in plate	1
E9	3060310030	screw M5*52	2
E10	3060316000		1
E11	3330401150	throttle rod	1
E12	3020102090	O ring for air-filter	1
E13	3050600210	air filter	1

F.Cylinder,muffler



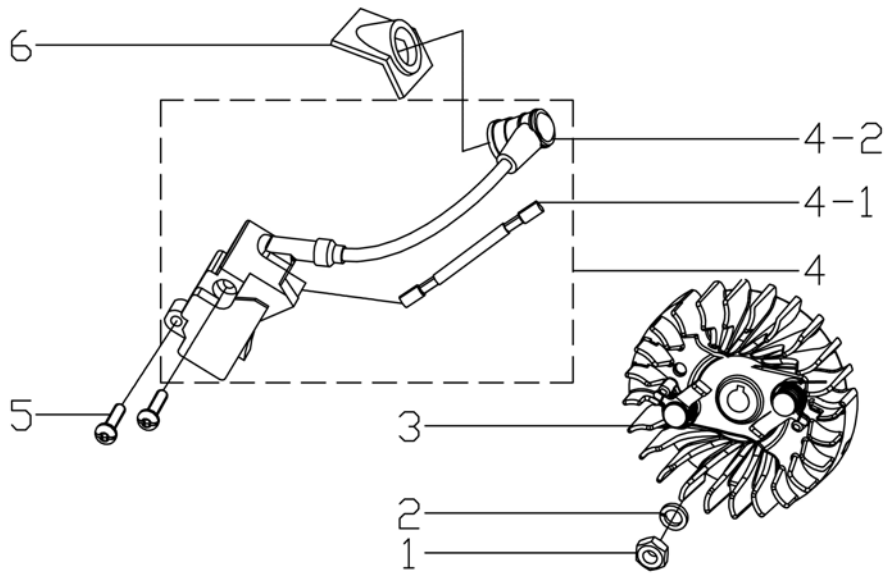
F1	3331100220	Maintainance ring	1
F2	3060311040	screw M5*12	4
F3	3020806020	ainr-in pipe	1
F4	3230102200	cylinder	1
F5	3040200620	seal cushion on cylinder	1
F6	3050105020	spark plug	1
F7	3060305210	screws M5*20	4
F8	3331500080	bolt for muffler	2
F9	3040201080	seal cushion for muffler	1
F10	3332600040	muffler assembly	1
F11	3332205040		1
F12	3060402050	nut M5	2

G.Crank shaft ,piston assembly



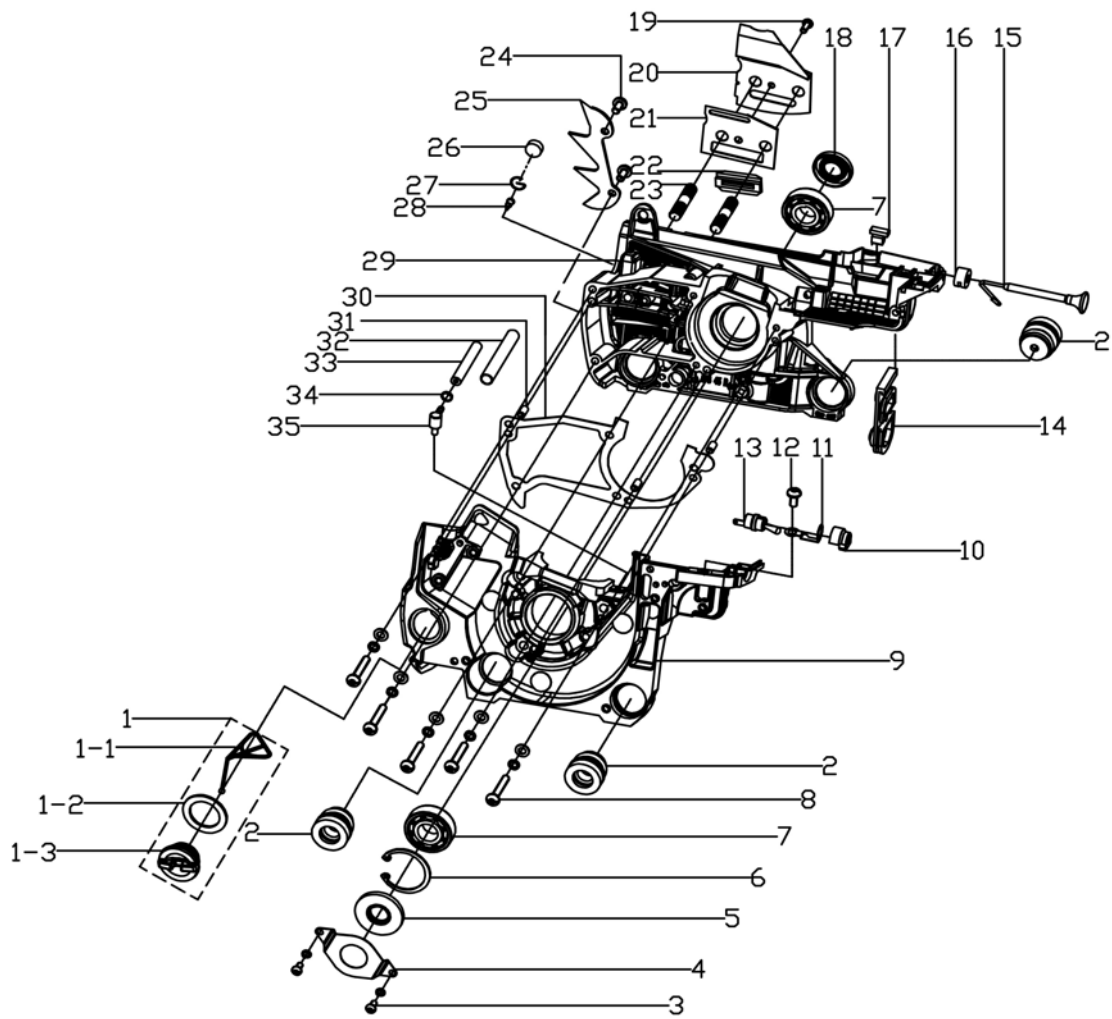
G1	3060900060	woodruff key	1
G2	3332200110	needle bearing flange	2
G3	3332401040	crankshaft assembly	1
G4	3060701430	needle bearing 11*15*12.5	1
G5	3231500320	piston	1
G6	3331701410	piston ring	2
G7	3330600640	piston retainer	2
G8	3330302240	piston pin	1

H. Flywheel, Ignition



H1	3060402040	Nut M8	1
H2	3060502040	Spring washer 8	1
H3	3231600150	flywheel assembly	1
H4	3030100670	Ignition apparatus	1
H4-1			1
H4-2			1
H5	3060307110	bolt M5*20	2
H6	3020902200	Ignition apparatus cover	1

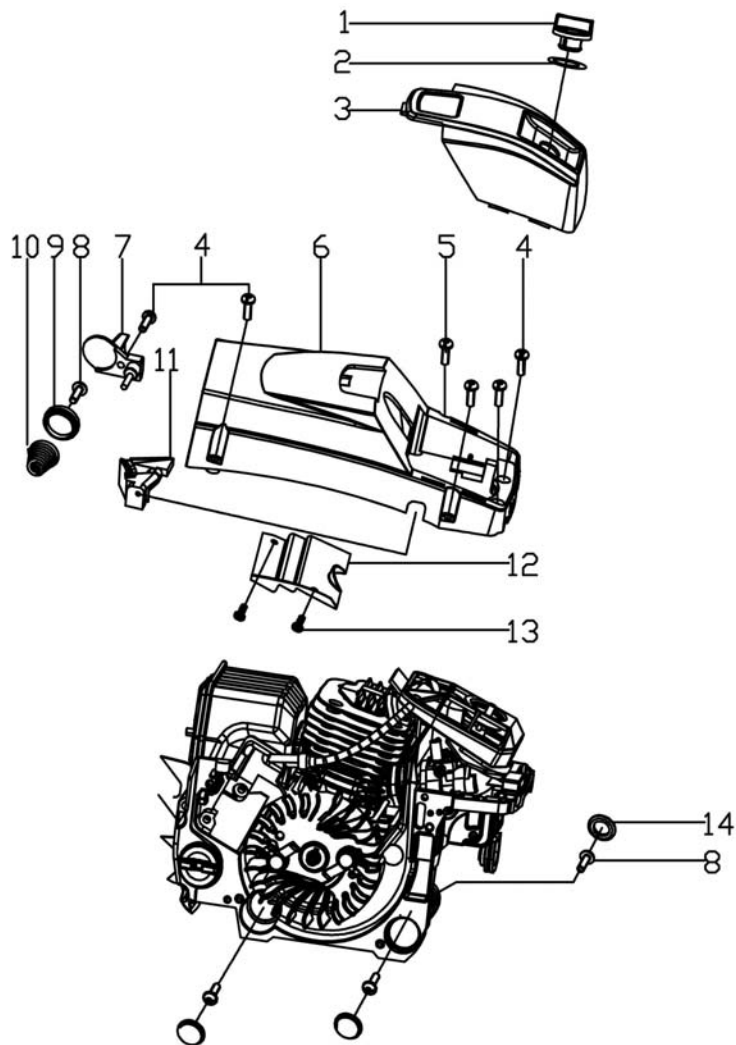
J.Crank case assembly



J1		oil tank assembly	1
J1-1	3011102070	falling-proof plate	1
J1-2	3020102010	O ring	1
J1-3	3011501500	cover of oil tank	1
J2	3020803510	short shock absorber	3
J3	3060312040	screw M4*8	2
J4	3331404010	oil-seal plate	1
J5	3060800100	oil seal 15*35*5	1
J6	3060600060	snap ring 35	1
J7	3060700310	ball bearing 6202	2
J8	3060310010	screw M5*30	5
J9	3230305001	left crankcase	1
J10	3020805200	flameout switch base	1
J11	3331100600	plate	1
J12	3060311030	screw M5*10	1
J13	3030600120	flameout switch	1
J14	3020501010	dust-proof plate	1
J15	3010500020	throttle rod	1
J16	3020801810	throttle rod plate	1
J17	3020802810	shock absorber	1

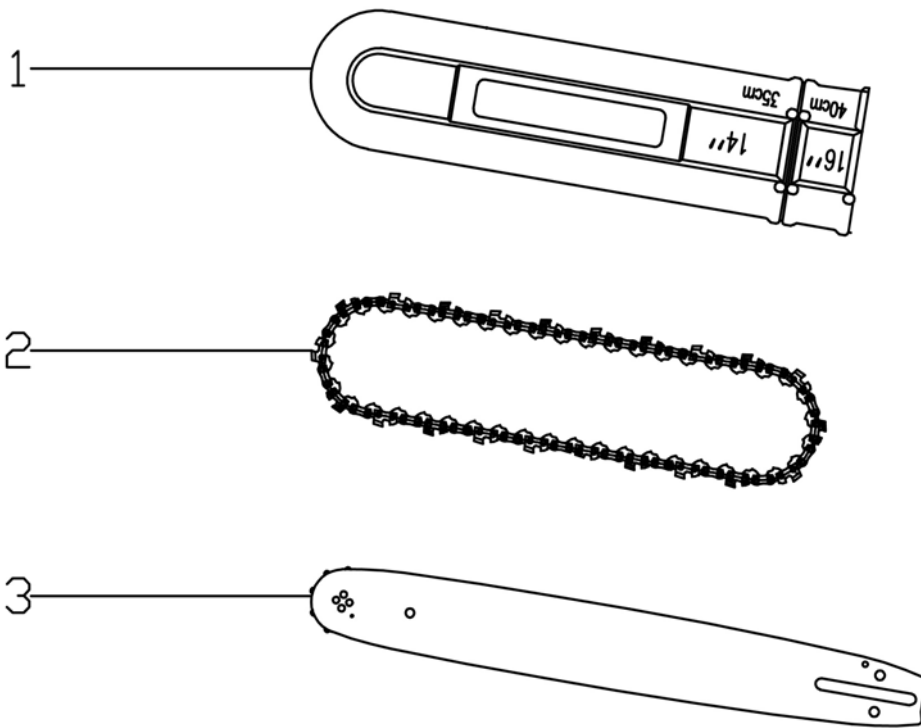
J18	3060800080	oil seal 15*28*5	1
J19		screw ST4.2*8	1
J20	3332201040	plate	1
J21	3040204910	plate washer	1
J22	3010704600	chain guide	1
J23	3060316030	bolt	2
J24	3060311040	screw M5*12	2
J25	3332205520	spiked bumper	1
J26	3051900800	sponge filter	1
J27	3330600070	air-in spring	1
J28	3021000040	air-in	1
J29	3230315001	right crankcase	1
J30	3060100110	bolt 5*10	3
J31	3040200230	crankcase seal washer	1
J32	3020702500	vacuum pipe	1
J33	3330600060	vacuum pipe clip	1
J34	3010600400	vacuum pipe-throat	1

K.Top cover,air filter cover



K1	3010303700	nut for air fliter	1
K2	3020101800	nut washer	1
K3	3010411330	cover for air filter	1
K4	3060311060	nut M5*16	5
K5	3060311050	nut M5*14	1
K6	3010132560	top cover	1
K7	3010704520	chain guide	1
K8	3060313220	screw ST4.8*16	4
K9	3010704700	Cone spring base	1
K10	3330500150	Cone spring base	1
K11	3020901500	idle speed adjuster	1
K12	3231200100	fan cover	1
K13	3060313230	screw ST4.2*8	2
K14	3010403100	dust-proof cover	3

L.Chain,guide bar



L1	3010414650	Guide bar sleeve	1
L2	3332700110	Guide bar	1
L3	3332800130	oregon18" 3/8chain	1